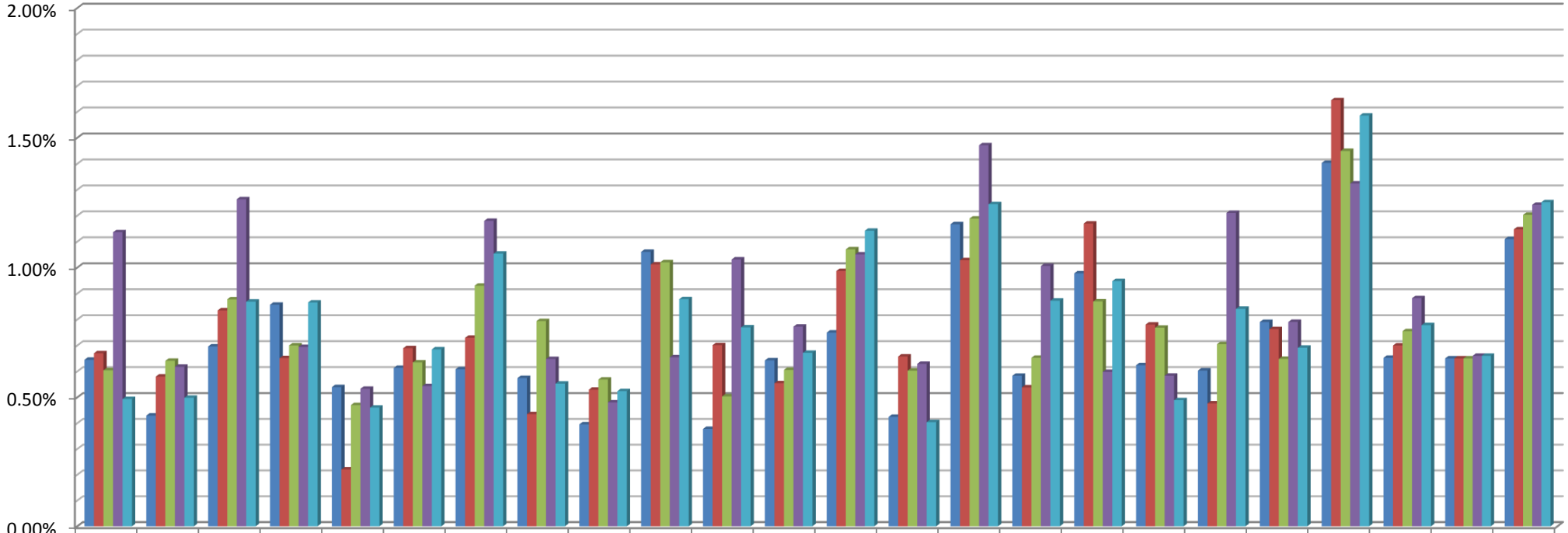


## NJEIS Percent of EI Population Compared to Census Population of Children 0<1 (Ind #5) FFY 2013-2017



	ATL	BERG	BURL	CAMD	CM	CUMB	ESX	GLO	HUD	HUNT	MER	MDSX	MONM	MOR	OC	PAS	SAL	SOM	SUSX	UN	WAR	Grand Total	Target%	National %
■ 2013	0.64%	0.43%	0.70%	0.86%	0.54%	0.61%	0.61%	0.57%	0.40%	1.06%	0.38%	0.64%	0.75%	0.42%	1.17%	0.58%	0.98%	0.62%	0.60%	0.79%	1.40%	0.65%	0.65%	1.11%
■ 2014	0.67%	0.58%	0.84%	0.65%	0.22%	0.69%	0.73%	0.43%	0.53%	1.01%	0.70%	0.55%	0.99%	0.66%	1.03%	0.54%	1.17%	0.78%	0.48%	0.76%	1.64%	0.70%	0.65%	1.15%
■ 2015	0.60%	0.64%	0.88%	0.70%	0.47%	0.63%	0.93%	0.79%	0.57%	1.02%	0.50%	0.61%	1.07%	0.60%	1.19%	0.65%	0.87%	0.77%	0.70%	0.65%	1.45%	0.75%	0.65%	1.20%
■ 2016	1.14%	0.62%	1.26%	0.69%	0.53%	0.54%	1.18%	0.65%	0.48%	0.65%	1.03%	0.77%	1.05%	0.63%	1.47%	1.01%	0.60%	0.58%	1.21%	0.79%	1.32%	0.88%	0.66%	1.24%
■ 2017	0.49%	0.50%	0.87%	0.87%	0.46%	0.68%	1.05%	0.55%	0.52%	0.88%	0.77%	0.67%	1.14%	0.40%	1.24%	0.87%	0.95%	0.49%	0.84%	0.69%	1.59%	0.78%	0.66%	1.25%